

Frame and cover of a telecommunications manhole

R2 frame 1000 × 600 for a telecommunications manhole cover

Material: grey cast iron
Recess dimensions: 1000mm x 600 mm
Frame wall thickness: 12 mm



Frame variant	Recess dimensions [mm]	Index	Qty / pallet
R2 Frame	1000 x 600	81023	13

Application: frames are used in the production of heavy-duty telecommunications (cable) manhole covers; the frame forms the perimeter of the cable chamber manhole opening.

Frame 1000 × 600 for telecommunications manhole covers

Material: grey cast iron
External dimensions: 1000 x 600 mm
Wall thickness: 12 mm



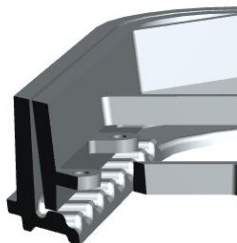
Frame variant	Dimensions [mm]	Index	Qty / pallet
Frame without ribs	1000 x 600	81012	13

Application: used for the production of heavy-duty telecommunications (cable) manhole covers; the frame forms the structural skeleton of the cable chamber cover.

Advantages: Frames fit perfectly into the outer frames, ensuring even load distribution.

Castings are produced on an automatic moulding line; dimensional repeatability of all components ensures 100% interchangeability of frames (each fits every frame). The frames feature a unique design that enables the drainage of water and debris from the space between the frame and the outer frame.

Note: The contractor responsible for the complete manhole assembly is responsible for the proper selection of both frames and outer frames. Proper reinforcement and concreting of both the frames and outer frames of the telecommunications manhole are the responsibility of the contractor performing these works.



The product cross-section shown in the drawing is for reference only — we reserve the right to introduce design changes to improve the product.